

CHELSEA NEWSLETTER



14 August 2011

WHAT'S ON at Chelsea Church of Christ



Monday:

[Prayer Meeting/Bible Study 9.30-10.30am](#)

Tuesday:

[Kankama 9-12 noon,](#)
[Skilling Australia 9am-4pm](#)

Wednesday:

[Community Breakfast 8-10 am,](#)
[Men's Shed 9am-12 noon,](#)
[Skilling Australia 9am-4pm](#)
[Women's Group](#)
2nd Wednesday of month

Thursday:

[Men's shed 9am - 12 noon](#)
[AA 11am - 12.30pm](#)
[Community Lunch 11am-1.00pm](#)
[Skilling Australia 9am-4pm](#)

Friday:

[Woorinyan @ the Men's Shed 9-12](#)
Green Core

Sunday:

[Worship 10am each week](#)
[Children's Sunday School 10 am each week](#)
[Introduction to Christianity](#)
2nd Sunday of each month 12 noon

PRAYERS

Please pray for the following...
Henry (breakfast helper),
Lesley Ingram's grandson
Tony & Lesley, Colin
Isabella Taylor, John M, Lyn
Audrey (John's sister-in-law)
Kath Marshall, Kathleen Frost,
Cheryl, Paul W, Jim,
Valda, Jan & Keith, Christine,
Natalie, Greig Kidman,
Lesley, Joyce, Syd
Yvonne (Dianne's sister in-law),
and any others on the hearts of
our church family.



DISCIPLES FOR JESUS

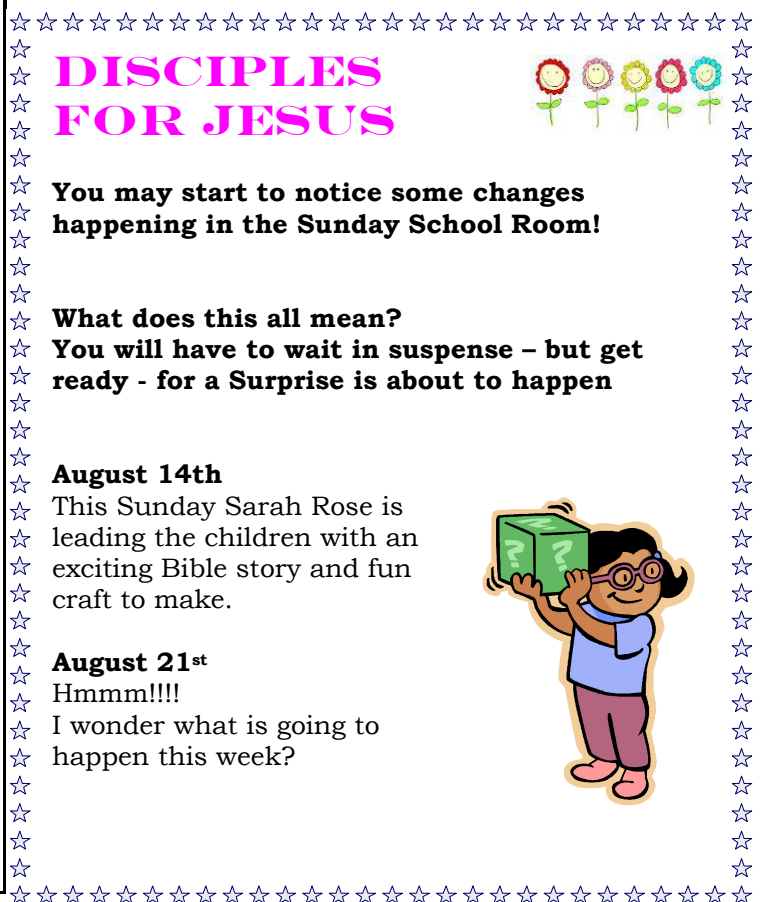
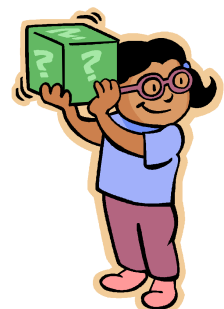


**You may start to notice some changes
happening in the Sunday School Room!**

**What does this all mean?
You will have to wait in suspense - but get
ready - for a Surprise is about to happen**

August 14th
This Sunday Sarah Rose is
leading the children with an
exciting Bible story and fun
craft to make.

August 21st
Hmmm!!!!
I wonder what is going to
happen this week?



Steve's sayings.....

"But Jesus calling them to him said, Suffer the little children unto me"

One of Jesus most well known sayings, so much so it has become part of our popular culture. I grew up singing these words in The great Cold Chisel anthem Choir girl.....

"...Suffer little Children, Send that little child to me, All day the doctor handles his responsibility. Looking like a choir girl..." © Universal Music Publishing Group -Donald Walker.

In fact I suspect many of us Aussies know the words more from pop culture than we do as words from the bible.

But what do they really mean? To watch passively as cute littlies come up to Jesus to ask him a question or listen at his feet? Maybe it is not such a passive thing. It could be a call to make sure we don't let our agenda, our needs, trample on the faith of Children and vulnerable people! Or perhaps it is something bigger, a call to actively seek to love and nurture the faith and life of Children.

Last week was a huge privilege for us at Chelsea Church of Christ, to welcome Harrison Clarke formally into faith, and to welcome his friends and family, as we committed to actively nurture him. This was a week of joyful celebration.

Steve

Upcoming Events (See noticeboard for more details)

Wednesday 17 August 2011 11.30am Mid week luncheon 10 years celebration
Baptist Church Chelsea- RSVP for catering

Saturday 27 August 2011 Embrace Freedom Women's Conference
One Community Church Blackburn.

Women are invited to come and share, to be encouraged, renewed and equipped to serve God & others better

Inspiring stories and worship, practical training, a great range of resources, counselling and prayer ministry, feel-good foods, and the opportunity to network with like-minded women will be features of this conference. Discounts are available for group registration, so get a car load of girlfriends together for a fantastic day together!

Sunday 28 August 2011 2 pm - Music & Song afternoon
- Patterson Lakes Community Centre

Sunday 4 September 2011 2pm - Spring Service
Baptist Church Chelsea

Friday 14 October 2011 Concert LF Payne Hall (RSL) Chelsea

Minister Stephen Rose
3 Blantyre Ave Chelsea
Office: 03 9773 0301
Mob 0429 783 482

Student Ministers: Judi Turnham , Colin Duggan

Secretary:

Editor: Margaret Dowlan

Shed Ministry: Keith Holt, Colin Duggan,
Geoff Crombie

Breakfast Ministry: Marj Thomas

Visiting Ministry: Val Arnold, Keith Holt,
Syd & Lesley Jackson

See phone list for contact details

Website: www.chelseachurchofchrist.org.au